



Tip Sheet

Electric Leveling Drive Pin Removal & Replacement for Kit 1010001889

© PowerGear 1/09 3010002134 Rev. 0A

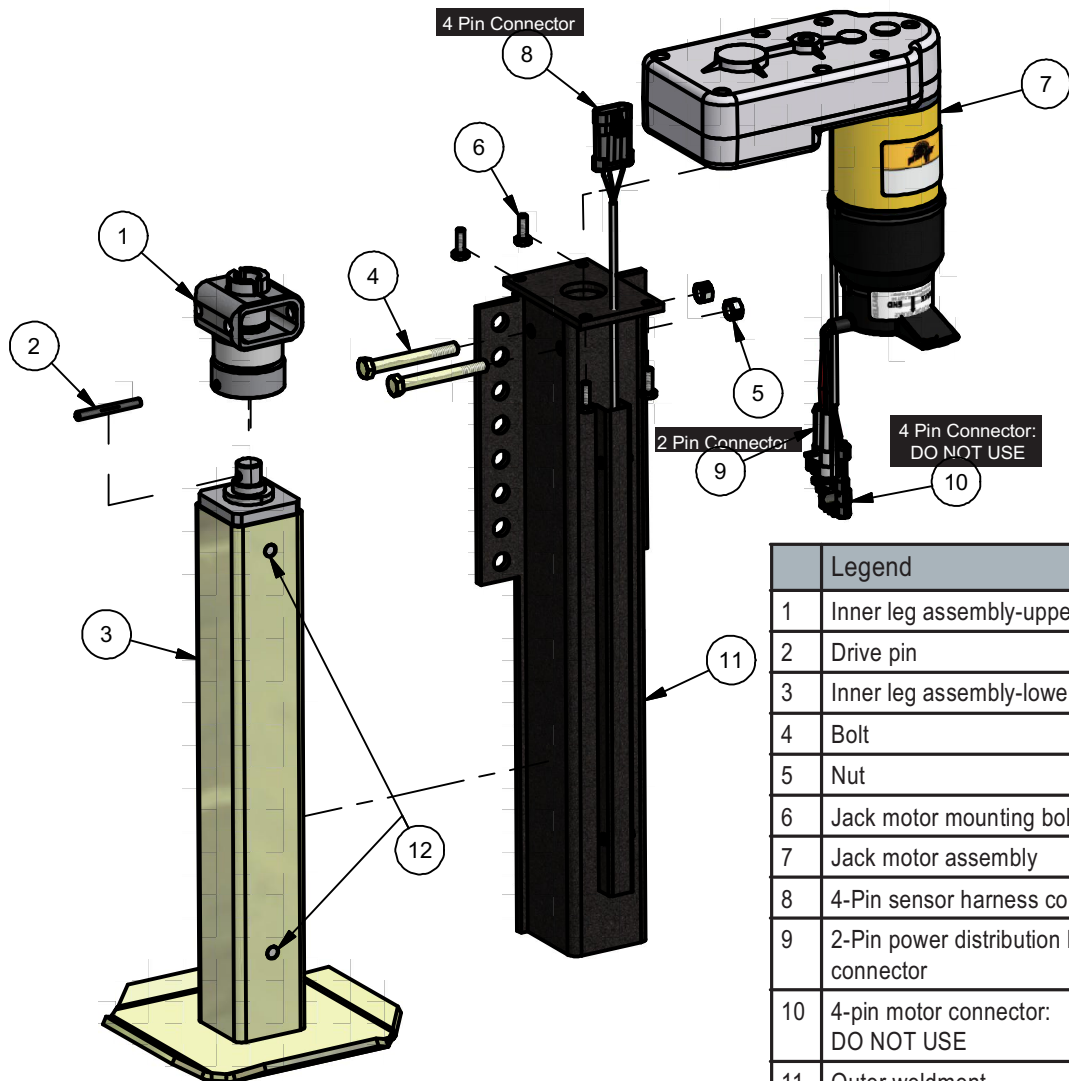
Electric Leveling Drive Pin Removal and Replacement

Removal & Replacement of Pin Procedure



WARNING
Before working underneath any coach, proper support of the chassis must be undertaken. Failure to properly support the coach can result in injury or death.

1. Park the motor home on a paved, level surface.
2. Place the transmission into Park (Neutral) and set the parking brake.
3. Turn off the ignition and remove the ignition key. Retain control of the keys until all repairs are complete.
4. Verify that the leveling jacks are fully retracted before proceeding.



Legend	
1	Inner leg assembly-upper
2	Drive pin
3	Inner leg assembly-lower
4	Bolt
5	Nut
6	Jack motor mounting bolts
7	Jack motor assembly
8	4-Pin sensor harness connector
9	2-Pin power distribution harness connector
10	4-pin motor connector: DO NOT USE
11	Outer weldment
12	Sensor Magnet



1217 E. 7th Street
Mishawaka, IN 46544
800.334.4712
PowerGearSolutions.com

Removal & Replacement Procedure, cont'd...

NOTE: Perform Steps 5-6 only if necessary to gain access to the jack mounting bracket.

5. Place a heavy duty floor jack under the chassis frame near the axle and raise the tire off the ground in order to obtain enough clearance to access the jack mounting location.
 6. Place a heavy duty jack stand under the frame near the floor jack, then slowly lower the floor jack until the coach weight is supported by the jack stand.
- Refer to the Assembly diagram on Page 1 to perform Steps 7-22.**
7. Unplug the 2-pin leveling jack motor harness connector (Item #9) from the power distribution harness.
 8. Disconnect the 4-pin sensor harness connector from the plug (Item #8) on the jack leg.
 9. Remove the leveling jack by unfastening the hardware connecting the jack to the mounting bracket. Make note of which holes were used on the jack leg to fasten it to the mounting bracket. Retain the leveling jack and all fastening hardware for later reinstallation.
 10. Place the jack on a sturdy work surface.
 11. Remove the four bolts fastening the motor assembly to the jack. (Item #6). Retain the bolts and motor for reassembly. Note orientation of motor before removing from leg.
 12. Remove the two sets of bolts and nuts (Items #4) from the outer weldment (#11). Retain all hardware for reassembly.
 13. Slide the inner leg assembly out of the outer weldment.
 14. Use a punch to remove the drive pin (Item #2) from the two sections of the inner leg assembly (Items #1 & #3). Support Items #1 & #3 of the inner leg during pin removal. Discard the original pin.
 15. Remove any dirt or debris from the holes for the pin on both Items #1 & #3, then reposition the sections so the retaining pin holes are aligned.
 16. Obtain a new drive pin. Apply a thin line of Loctite 680 retaining compound (included) to both the pin (Item #2) and the hole in Item #1 per the manufacturer's recommendation on the back of the retaining compound bag.
 17. Drive the new drive pin into place in the same direction the old pin was removed. After installation, the ends of the pin should be flush with the surface of the top drive of the inner leg. Support Items #1 & #3 of the inner leg during pin insertion.
 18. Reinstall the inner leg assembly by sliding into the outer weldment. Verify the two magnets (Item #12) are seated properly and are aligned with the sensor. Fasten with existing nuts and bolts. Torque bolts to 30 ft-lbs.
 19. Reinstall the motor assembly using original bolts. (Item #6). Torque bolts to 15 ft-lbs.
 20. Reinstall the leveling jack assembly to the mounting bracket on the motor home chassis in its original location using existing bolts. Torque the mounting bolts to 90 ft-lbs.
 21. Reconnect the leveling jack motor plug (Item #9) to the power distribution harness.
 22. Reconnect the 4-pin sensor harness plug to the plug at the top of the jack leg (Item #8).
- NOTE: The jack motor may have been equipped with a 4-pin connector. DO NOT USE this connector.**
23. Repeat Steps #7 - #22 to replace the drive pins in the remaining jacks, except for any jack that was completely replaced.
 24. If a floor jack and jack stands were used during repairs: Remove the jack stands, then lower and remove the floor jack.
 25. Test the operation of the jacks by performing an automatic leveling cycle per the Electric Jack Operator's Manual. If jack operation results in a malfunction of the system, refer to Power Gear Tip Sheet #3010002127, Electric Jack Error Mode Resetting Procedure.